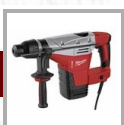
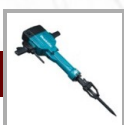


RENT CATALOG



Search results for ...

Prices vary according to the duration of rent ...

short term + 5 days + 15 days Week-end

Demolition hammer
Pick included



15 kg Hammer

Price / day (EUR)	Price / day (EUR)	Price / day (EUR)	Total price (EUR)
34	27.2	20.4	44.2

Demolition hammer
Pick included



30 kg Hammer

Price / day (EUR)	Price / day (EUR)	Price / day (EUR)	Total price (EUR)
47	37.6	28.2	61.1

Demolition hammer
Pick included



5,3 kg Hammer

Price / day (EUR)	Price / day (EUR)	Price / day (EUR)	Total price (EUR)
19	15.2	11.4	24.7

Demolition hammer
Pick included



7,5 kg Hammer

Price / day (EUR)	Price / day (EUR)	Price / day (EUR)	Total price (EUR)
22	17.6	13.2	28.6

Demolition hammer
Pick included



9,3 kg Hammer

Price / day (EUR)	Price / day (EUR)	Price / day (EUR)	Total price (EUR)
27	21.6	16.2	35.1

198 - 350 cm
price per piece

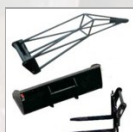


A350 DIN props

Price per month
2.5

for Maniscopics

Forks TFF (7500 kg)
Bracket P600MTS2 (600 kg)
Bucket CBC900L2450 (900 liters)
Bucket CBC1000L2450 (1 000 liters)



Accessories

Prices and informations on request

Manual platform
Max. working height: 9,20 m
Max. capacity: 165 kg
Weight: 301 kg
Length: 1,33 m
Width: 0,77 m



VERTICAL PLATFORM

279 - 500 cm
price per piece



ALP-LIFT

Price / day (EUR)	Price / day (EUR)	Price / day (EUR)	Total price (EUR)
61	48.8	36.6	79.3

ALU props

Price per month
5

Reversible
Weight: 440 - 460 kg



AMM. AVP5920 / AVH6020

Price / day (EUR)	Price / day (EUR)	Price / day (EUR)	Total price (EUR)
45	36	27	58.5

RENT CATALOG

Reversible
Weight: 778 kg
Width: 65/95 cm
Power: 110 kW



AMMANN APH 110-95

Price / day (EUR)	Price / day (EUR)	Price / day (EUR)	Total price (EUR)
85	68	51	110.5

Weight: 650 kg
Width: 71 cm
Power: 18 kW



AMMANN AR65

Price / day (EUR)	Price / day (EUR)	Price / day (EUR)	Total price (EUR)
41	32.8	24.6	53.3

Weight: 9 000 kg
Width: 168 cm
Power: 145 kW



AMMANN ASC90

Price / day (EUR)	Price / day (EUR)	Price / day (EUR)	Total price (EUR)
160	128	96	208

Weight: 1 700 kg
Width: 90 cm
Power: 13 kW



AMMANN AV16

Price / day (EUR)	Price / day (EUR)	Price / day (EUR)	Total price (EUR)
70	56	42	91

Weight: 2 400 kg
Width: 100 cm
Power: 28 kW



AMMANN AV23

Price / day (EUR)	Price / day (EUR)	Price / day (EUR)	Total price (EUR)
82	65.6	49.2	106.6

Weight: 4 000 kg
Width: 130 cm
Power: 32 kW



AMMANN AV40

Price / day (EUR)	Price / day (EUR)	Price / day (EUR)	Total price (EUR)
100	80	60	130

Reversible
Weight: 680 kg
Width: 65/95 cm
Power: 100 kW



AMMANN AVH 100-20

Price / day (EUR)	Price / day (EUR)	Price / day (EUR)	Total price (EUR)
70	56	42	91

Reversible
Weight: 460 kg
Width: 55/85 cm
Power: 65 kW



AMMANN AVH 6020

Price / day (EUR)	Price / day (EUR)	Price / day (EUR)	Total price (EUR)
45	36	27	58.5

Reversible
Weight: 480 kg
Width: 55/85 cm
Power: 60 kW



AMMANN AVH 6030

Price / day (EUR)	Price / day (EUR)	Price / day (EUR)	Total price (EUR)
50	40	30	65

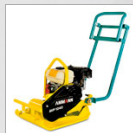
Reversible
Weight: 480 kg
Width: 55/85 cm
Power: 60 kW



AMMANN AVH 6030-ACE

Price / day (EUR)	Price / day (EUR)	Price / day (EUR)	Total price (EUR)
55	44	33	71.5

Forward move
Weight: 80 kg
Width: 40 cm
Power: 12 kW

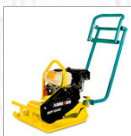


AMMANN AVP 1240

Price / day (EUR)	Price / day (EUR)	Price / day (EUR)	Total price (EUR)
22	17.6	13.2	28.6

RENT CATALOG

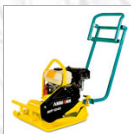
Forward move
Weight: 80 - 100 kg



AMMANN AVP 1240 / 1850

Price / day (EUR)	Price / day (EUR)	Price / day (EUR)	Total price (EUR)
22	17.6	13.2	28.6

Forward move
Weight: 100 kg
Width: 50 cm
Power: 18 kN



AMMANN AVP 1850

Price / day (EUR)	Price / day (EUR)	Price / day (EUR)	Total price (EUR)
22	17.6	13.2	28.6

Reversible
Weight: 130 kg
Width: 40/50 cm
Power: 22 kN



AMMANN AVP 2620

Price / day (EUR)	Price / day (EUR)	Price / day (EUR)	Total price (EUR)
32	25.6	19.2	41.6

Reversible
Weight: 205 kg
Width: 50/70 cm
Power: 30 kN



AMMANN AVP 3020

Price / day (EUR)	Price / day (EUR)	Price / day (EUR)	Total price (EUR)
35	28	21	45.5

Reversible
Weight: 280 kg
Width: 50/70 cm
Power: 38 kN



AMMANN AVP 3520

Price / day (EUR)	Price / day (EUR)	Price / day (EUR)	Total price (EUR)
37	29.6	22.2	48.1

Reversible
Weight: 400 kg
Width: 45/75 cm
Power: 47 kN



AMMANN AVP 5020

Price / day (EUR)	Price / day (EUR)	Price / day (EUR)	Total price (EUR)
40	32	24	52

Reversible
Weight: 440 kg
Width: 60/75 cm
Power: 59 kN



AMMANN AVP 5920

Price / day (EUR)	Price / day (EUR)	Price / day (EUR)	Total price (EUR)
45	36	27	58.5

Weight: 70 kg
Width: 28 cm
Frequency: 11-12 Hz
Power: 0,93 kW



AMMANN DVS 68

Price / day (EUR)	Price / day (EUR)	Price / day (EUR)	Total price (EUR)
22	17.6	13.2	28.6

Trench roller
Weight: 1 400 kg
Width: 640 - 850 cm



AMMANN Rammax 1575

Price / day (EUR)	Price / day (EUR)	Price / day (EUR)	Total price (EUR)
77	61.6	46.2	100.1

Mobile traffic lights



BERGHAUS MPB 1/1

Price / day (EUR)	Price / day (EUR)	Price / day (EUR)	Total price (EUR)
30	24	18	39

Hammer 5 - 13 kg
Pick included



BOEHLER

Price / day (EUR)	Price / day (EUR)	Price / day (EUR)	Total price (EUR)
10	8	6	13

RENT CATALOG

Concrete breaker 20 - 30 kg
Pick included



Piercer 18 kg
Pick included



Spire hammer



Length: 6 m



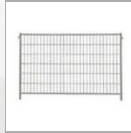
40A with 20 m cable 11 mm



65A with 20 m cable 16 mm



price per meter
Length: 3,50 m / Height: 2 m
Concrete base: 42 kg



Electric engine 220V
max cutting depth: 160 mm



Max. height: 5 m
Max. capacity: 500 kg
Lifting speed: 8 m/min
Weight: 500 kg
Length: 6,7 m
Width: 2,05 m



electric
Max. output: 31 m3/h
Max. elevation: 11 m
Length: 290 mm
Width: 200 mm
Height: 390 mm



electric 220V
Max. output: 39 m3/h
Max. elevation: 13 m
Length: 310 mm
Width: 200 mm
Height: 450 mm



BOEHLER

Price / day (EUR)	Price / day (EUR)	Price / day (EUR)	Total price (EUR)
12	9.6	7.2	15.6

BOEHLER

Price / day (EUR)	Price / day (EUR)	Price / day (EUR)	Total price (EUR)
14	11.2	8.4	18.2

BOEHLER

Price / day (EUR)	Price / day (EUR)	Price / day (EUR)	Total price (EUR)
15	12	9	19.5

BOS Container

Price per month
160

BOSECKER 40A

Price per month
65

BOSECKER 63A

Price per month
70

Building-site fences (m)

Price per month
2.35

in packs of 105 m: 2,00 EUR/meter

CARDI TP400

Price / day (EUR)	Price / day (EUR)	Price / day (EUR)	Total price (EUR)
50	40	30	65

wear of the disk: EUR 74,00 NET per mm consumption

Crane STEINWEG

Price / day (EUR)	Price / day (EUR)	Price / day (EUR)	Total price (EUR)
37	29.6	22.2	48.1

DIA TL50 / TSN60

Price / day (EUR)	Price / day (EUR)	Price / day (EUR)	Total price (EUR)
22	17.6	13.2	28.6

DIA TL75

Price / day (EUR)	Price / day (EUR)	Price / day (EUR)	Total price (EUR)
27	21.6	16.2	35.1

RENT CATALOG

Manual forward
Cutting depth: 140 mm
Disk size: 400 mm
Weight: 90 kg
Length: 1100 mm
Width: 590 mm



Manual forward
Cutting depth: 140 mm
Disk size: 400 mm
Weight: 200 kg
Length: 1500 mm
Width: 620 mm



High pressure cleaner
Fuel
200 bar



Hand core driller
up to 120 mm



Renting of the stroke only



Weight: 9 kg



Length: 3,50 m
Width: 2,20 m
Height: 2,30 m



Manual elevator
Max. capacity: 5,74 m / 300 kg
Weight: 236 kg
Length: 0,83 m
Width: 0,76 m



Fuel planing machine



Stone saw
Cutting depth: 100 mm
Cutting length: 650 mm
Disk size: 350 mm
Weight: 80 kg
Motor 220 V, 2,2 kW



DIAMANT BOARD FS 350

Price / day (EUR)	Price / day (EUR)	Price / day (EUR)	Total price (EUR)
42	33.6	25.2	54.6

wear of the disk: ASPHALT EUR 70,00 NET / CONCRETE EUR 74,00 NET per mm consumption

DIAMANT BOARD FS 500

Price / day (EUR)	Price / day (EUR)	Price / day (EUR)	Total price (EUR)
50	40	30	65

wear of the disk: ASPHALT EUR 70,00 NET / CONCRETE EUR 74,00 NET per mm consumption

DIBO PTL-M200

Price / day (EUR)	Price / day (EUR)	Price / day (EUR)	Total price (EUR)
37	29.6	22.2	48.1

DR BENDER EBM33

Price / day (EUR)	Price / day (EUR)	Price / day (EUR)	Total price (EUR)
25	20	15	32.5

wear of the stroke: EUR 54,00 to 84,00 NET per mm consumption depending on size

Drilling strokes

Price / day (EUR)	Price / day (EUR)	Price / day (EUR)	Total price (EUR)
2.5	2	1.5	3.25

wear of the stroke: EUR 54,00 to 94,00 NET per mm consumption depending on size

Dump hopper

Price / day (EUR)	Price / day (EUR)	Price / day (EUR)	Total price (EUR)
2.5	2	1.5	3.25

EBERHARDT Caravan

Price per month
165

Elevator ALP-LIFT

Price / day (EUR)	Price / day (EUR)	Price / day (EUR)	Total price (EUR)
37	29.6	22.2	48.1

EPERVIER

Price / day (EUR)	Price / day (EUR)	Price / day (EUR)	Total price (EUR)
50	40	30	65

EUROCOUP 350

Price / day (EUR)	Price / day (EUR)	Price / day (EUR)	Total price (EUR)
54	43.2	32.4	70.2

wear of the disk: EUR 44,00 NET per mm consumption

Flexibles

Price / day (EUR)	Price / day (EUR)	Price / day (EUR)	Total price (EUR)
2	1.6	0.9	2.6

RENT CATALOG

NPK H-08A, H-1XA or H-2XA
Weight 105 - 240 kg



NPK H-3XA
Weight 365 kg



NPK E204 or GH3
Weight 390 - 410 kg



NPK GH4
Weight 570 kg



NPK GH7
Weight 1 345 kg



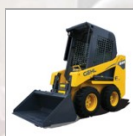
Platform for persons and goods
Max. height: 40 m
Max. capacity: 1500 kg
Width platform: 1,40 m
Length platform: 2,00 m



Max. height: 13 m
Max. capacity: 200 kg
Lifting speed: 25 m/min
Power: 1 kW
Voltage: 230 V



Weight: 1 350 kg
Width 914 mm
Length: 2 576 mm
Height: 1 897 mm
Power: 24,4 hp



Weight: 1 352 kg
Width 914 mm
Length: 2 576 mm
Height: 1 897 mm
Power: 24,3 hp



Weight: 2 300 kg
Width 1 370 mm
Length: 3 056 mm
Height: 1 908 mm
Power: 44,8 hp
210 l bucket



Weight: 2 377 kg
Width 1 651 mm
Length: 3 016 mm
Height: 1 930 mm
Power: 48 hp
330 l bucket



for 1 - 2,5 t excavators

Price / day (EUR)	Price / day (EUR)	Price / day (EUR)	Total price (EUR)
55	44	33	71.5

picks included

for 2,5 - 3,5 t excavators

Price / day (EUR)	Price / day (EUR)	Price / day (EUR)	Total price (EUR)
71	56.8	42.6	92.3

picks included

for 6 - 8 t excavators

Price / day (EUR)	Price / day (EUR)	Price / day (EUR)	Total price (EUR)
86	68.8	51.6	111.8

picks included

for 8 - 14 t excavators

Price / day (EUR)	Price / day (EUR)	Price / day (EUR)	Total price (EUR)
107	85.6	64.2	139.1

picks included

for 8 - 14 t excavators

Price / day (EUR)	Price / day (EUR)	Price / day (EUR)	Total price (EUR)
260	215	160	338

picks included

GEDA ERA 1200 Z-ZP

Prices and informations on request

GEDA Lift

Price / day (EUR)	Price / day (EUR)	Price / day (EUR)	Total price (EUR)
75	60	33.75	97.5

Price of sanding tub: 25 - 17 - 10 EUR/day according to rent duration - 32,5 EUR/WE

GEHL 1640

Price / day (EUR)	Price / day (EUR)	Price / day (EUR)	Total price (EUR)
90	72	54	117

GEHL 1640

Price / day (EUR)	Price / day (EUR)	Price / day (EUR)	Total price (EUR)
90	72	54	117

GEHL R 135

Price / day (EUR)	Price / day (EUR)	Price / day (EUR)	Total price (EUR)
100	80	60	130

GEHL SL4640

Price / day (EUR)	Price / day (EUR)	Price / day (EUR)	Total price (EUR)
123	98.4	73.8	159.9

RENT CATALOG

Weight: 3 864 kg
Width 2 559 mm
Length: 3 327 mm
Height: 2 013 mm
Power: 80 hp
540 l bucket



GEHL SXT5640

Price / day (EUR)	Price / day (EUR)	Price / day (EUR)	Total price (EUR)
148	118.4	88.8	192.4

Electric planing machine



GOELZ BF300

Price / day (EUR)	Price / day (EUR)	Price / day (EUR)	Total price (EUR)
50	40	30	65

Manual forward 380 V
Cutting depth: 125 mm
Disk size: 350 mm
Weight: 80 kg
Length: 1000 mm
Width: 570 mm



GOELZ FS 130

Price / day (EUR)	Price / day (EUR)	Price / day (EUR)	Total price (EUR)
42	33.6	25.2	54.6

wear of the disk: ASPHALT EUR 70,00 NET / CONCRETE EUR 74,00 NET per mm consumption

Manual forward
Cutting depth: 140 mm
Disk size: 400 mm
Weight: 102 kg
Length: 1000 mm
Width: 570 mm



GOELZ FS 170

Price / day (EUR)	Price / day (EUR)	Price / day (EUR)	Total price (EUR)
50	40	30	65

wear of the disk: ASPHALT EUR 70,00 NET / CONCRETE EUR 74,00 NET per mm consumption

Manual forward
Cutting depth: 190 mm
Diamètre du disque: 450 mm
Weight: 100 kg
Length: 1200 mm
Width: 490 mm

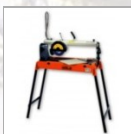


GOELZ FS170H

Price / day (EUR)	Price / day (EUR)	Price / day (EUR)	Total price (EUR)
60	48	36	78

wear of the disk: ASPHALT EUR 70,00 NET / CONCRETE EUR 74,00 NET per mm consumption

Tiling saw
Cutting depth: 40 mm
Cutting length: 600 mm
Disk size: 200 mm
Weight: 34 kg
Motor 220 V, 0,65 kW

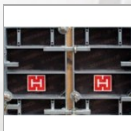


GOELZ FT 200

Price / day (EUR)	Price / day (EUR)	Price / day (EUR)	Total price (EUR)
22	17.6	13.2	28.6

wear of the disk: EUR 30,00 NET per mm consumption

modular formwork for medium and long-term renting



HARSCO - HUNNEBECK

prices and conditions for modular formwork on request

309 - 550 cm
price per piece



Heavy-duty props

Price per month
5

for Maniscopics
3 000 kg



Hoist

Price / day (EUR)	Price / day (EUR)	Price / day (EUR)	Total price (EUR)
30	24	18	39

fueled
Max. output: 36 m3/h
Max. elevation: 26 m
Length: 505 mm
Width: 375 mm
Height: 360 mm



HONDA WB 20X

Price / day (EUR)	Price / day (EUR)	Price / day (EUR)	Total price (EUR)
17	13.6	10.2	22.1

fueled
Max. output: 60 m3/h
Max. elevation: 30 m
Length: 660 mm
Width: 495 mm
Height: 450 mm



HONDA WB 30X

Price / day (EUR)	Price / day (EUR)	Price / day (EUR)	Total price (EUR)
22	17.6	13.2	28.6

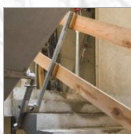
fueled
Max. output: 98,4 m3/h
Max. elevation: 26 m
Length: 735 mm
Width: 535 mm
Height: 565 mm



HONDA WT 40X

Price / day (EUR)	Price / day (EUR)	Price / day (EUR)	Total price (EUR)
27	21.6	16.2	35.1

safety system
price per piece



HUNNEBECK protecto

Price per week	Price per month
2.5	7.5

Manual forward
Cutting depth: 190 mm
Diamètre du disque: 500 mm
Weight: 163 kg
Length: 1550 mm
Width: 655 mm

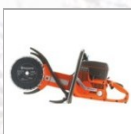


HUSQVARNA FS413

Price / day (EUR)	Price / day (EUR)	Price / day (EUR)	Total price (EUR)
60	48	36	78

wear of the disk: ASPHALT EUR 70,00 NET / CONCRETE EUR 74,00 NET per mm consumption

Fuel grinder double disk
Max cutting depth: 400 mm



HUSQVARNA K650

Price / day (EUR)	Price / day (EUR)	Price / day (EUR)	Total price (EUR)
45	36	27	58.5

wear of the disk: EUR 74,00 NET per mm consumption

Output: 10000 l/m
Pressure: 7-14 bar
Weight: 1495 kg
Power: 98 cv



KAESER M 100

Price / day (EUR)	Price / day (EUR)	Price / day (EUR)	Total price (EUR)
88	70.4	52.8	114.4

Output: 10000 l/m
Pressure: 10-14 bar



KAESER M 100 / M114

Price / day (EUR)	Price / day (EUR)	Price / day (EUR)	Total price (EUR)
88	70.4	52.8	114.4

Output: 10000 l/m
Pressure: 10-14 bar
Weight: 1865 kg
Power: 116,5 hp



KAESER M 114

Price / day (EUR)	Price / day (EUR)	Price / day (EUR)	Total price (EUR)
88	70.4	52.8	114.4

Output: 3000 l/m
Pressure: 7 bar
Weight: 700 kg
Power: 23,5 hp



KAESER M 30

Price / day (EUR)	Price / day (EUR)	Price / day (EUR)	Total price (EUR)
35	28	21	45.5

Output: 3000 l/m



KAESER M 30 / M 31

Price / day (EUR)	Price / day (EUR)	Price / day (EUR)	Total price (EUR)
35	28	21	45.5

Output: 3000 l/m
Pressure: 3,5 - 8 bar
Weight: 700 kg
Power: 22 cv



KAESER M 31

Price / day (EUR)	Price / day (EUR)	Price / day (EUR)	Total price (EUR)
35	28	21	45.5

Output: 4000 l/m
Pressure: 3,5 - 8 bar
Weight: 730 kg
Power: 35 cv



KAESER M 43

Price / day (EUR)	Price / day (EUR)	Price / day (EUR)	Total price (EUR)
35	28	21	45.5

Output: 5000 l/m
Pressure: 4,5 - 8 bar
Weight: 1100 kg
Power: 38 cv



KAESER M 57

Price / day (EUR)	Price / day (EUR)	Price / day (EUR)	Total price (EUR)
40	32	24	52

Output: 8000 l/m
Pressure: 4 - 8 bar
Weight: 1300 kg
Power: 58 cv



KAESER M 80

Price / day (EUR)	Price / day (EUR)	Price / day (EUR)	Total price (EUR)
50	40	30	65

Petrol heater
Direkt combustion



KROLL

Price / day (EUR)	Price / day (EUR)	Price / day (EUR)	Total price (EUR)
20	16	12	26

Electric heater
Air output: 725 m3/h



KROLL E12

Price / day (EUR)	Price / day (EUR)	Price / day (EUR)	Total price (EUR)
15	12	9	19.5

Electric heater
Air output: 185 m3/h



KROLL E3

Price / day (EUR)	Price / day (EUR)	Price / day (EUR)	Total price (EUR)
7	5.6	4.2	9.1

Electric heater
Air output: 420 m3/h



KROLL E8

Price / day (EUR)	Price / day (EUR)	Price / day (EUR)	Total price (EUR)
14	11.2	8.4	18.2

Petrol heater
Indirect combustion
Air output: 2900 m3/h



KROLL M50

Price / day (EUR)	Price / day (EUR)	Price / day (EUR)	Total price (EUR)
60	48	36	78

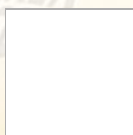
dehumidicator
230 V
Air output: 1000 m3/h
Capacity: 40l/24h



KROLL TE40

Price / day (EUR)	Price / day (EUR)	Price / day (EUR)	Total price (EUR)
20	16	12	26

Weight: 9 000 kg



LIEBHERR A309

Price / day (EUR)	Price / day (EUR)	Price / day (EUR)	Total price (EUR)
250	220	170	325

Weight: 11.000 kg



LIEBHERR A310

Price / day (EUR)	Price / day (EUR)	Price / day (EUR)	Total price (EUR)
290	250	190	377

Weight: 11.000 - 13.000 kg



LIEBHERR A310 / A912 Com

Price / day (EUR)	Price / day (EUR)	Price / day (EUR)	Total price (EUR)
290	250	190	377

Weight: 20.000 kg



LIEBHERR A904

Price / day (EUR)	Price / day (EUR)	Price / day (EUR)	Total price (EUR)
350	330	260	455

Weight: 13.000 kg



LIEBHERR A912 Compact

Price / day (EUR)	Price / day (EUR)	Price / day (EUR)	Total price (EUR)
290	250	190	377

Weight: 17.000 kg



LIEBHERR A914 Compact

Price / day (EUR)	Price / day (EUR)	Price / day (EUR)	Total price (EUR)
320	280	220	416

Weight: 18.000 kg



LIEBHERR A918 Compact

Price / day (EUR)	Price / day (EUR)	Price / day (EUR)	Total price (EUR)
340	320	250	442

Weight: 4 810 kg

800 l bucket
Width 1 800 mm
Length: 5 250 mm
Height: 2 675 mm
Power: 60 hp



LIEBHERR L506

Price / day (EUR)	Price / day (EUR)	Price / day (EUR)	Total price (EUR)
140	112	84	182

Weight: 5 800 kg

Bucket 1 100 l



LIEBHERR L508 Compact

Price / day (EUR)	Price / day (EUR)	Price / day (EUR)	Total price (EUR)
150	120	90	195

Weight: 6 000 kg

1 100 l bucket
Width 2 100 mm
Length: 5 325 mm
Height: 2 725 mm
Power: 71 hp



LIEBHERR L509

Price / day (EUR)	Price / day (EUR)	Price / day (EUR)	Total price (EUR)
160	128	96	208

Weight: 8 350 kg

1 500 l bucket
Width 2 400 mm
Length: 6 300 mm
Height: 3 070 mm
Power: 98 hp



LIEBHERR L514

Price / day (EUR)	Price / day (EUR)	Price / day (EUR)	Total price (EUR)
220	180	150	286

Weight: 10 200 kg

2 000 l bucket
Width 2 500 mm
Length: 6 900 mm
Height: 3 200 mm
Power: 120 hp



LIEBHERR L524

Price / day (EUR)	Price / day (EUR)	Price / day (EUR)	Total price (EUR)
250	220	170	325

Weight: 12 800 kg

2 400 l bucket
Width: 2 500 mm
Length: 7 150 mm
Height: 3 250 mm
Power: 141 hp



LIEBHERR L538

Price / day (EUR)	Price / day (EUR)	Price / day (EUR)	Total price (EUR)
280	250	200	364

Weight: 24 000 kg

4 200 l bucket
Width: 3 000 mm
Length: 9 200 mm
Height: 3 600 mm
Power: 272 hp



LIEBHERR L566 XPower

Price / day (EUR)	Price / day (EUR)	Price / day (EUR)	Total price (EUR)
360	300	260	468

RENT CATALOG

Weight: 24 000 kg
short-term rent not possible



LIEBHERR PR734

Price / day (EUR)	Price / day (EUR)
530	425

Weight: 17.000 kg
quick-change tool



LIEBHERR R914 Compact

Price / day (EUR)	Price / day (EUR)	Price / day (EUR)	Total price (EUR)
290	250	190	377

Weight: 23.000 kg
quick-change tool



LIEBHERR R914 Li

Price / day (EUR)	Price / day (EUR)	Price / day (EUR)	Total price (EUR)
440	360	310	572

Weight: 20.000 kg
quick-change tool



LIEBHERR R918 Li

Price / day (EUR)	Price / day (EUR)	Price / day (EUR)	Total price (EUR)
310	280	230	403

Weight: 25.000 kg
quick-change tool
hydraulic adjustable boom



LIEBHERR R924

Price / day (EUR)	Price / day (EUR)	Price / day (EUR)	Total price (EUR)
480	400	340	624

Weight: 35.000 kg



LIEBHERR R934 Li

Price / day (EUR)	Price / day (EUR)	Price / day (EUR)	Total price (EUR)
530	450	380	689

mobile excavators
11.000 - 27.000 kg



LIEBHERR Rental Services

prices and conditions on request / please contact us for more info

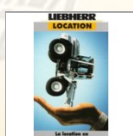
crawler machines
14.000 - 125.000 kg



LIEBHERR Rental Services

prices and conditions on request / please contact us for more info

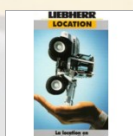
wheeled loaders
5.000 - 36.000 kg



LIEBHERR Rental Services

prices and conditions on request / please contact us for more info

excavators, loaders, bulldozers
1.000 - 125.000 kg



LIEBHERR Rental Services

prices and conditions on request / please contact us for more info

Weight: 28.000 kg



LIEBHERR R926 Compact

Price / day (EUR)	Price / day (EUR)	Price / day (EUR)	Total price (EUR)
480	400	340	624

RENT CATALOG

Capacity: 200 kg
Lifting speed: 20 m/min
Length of cable: 25 m
Dimensions: 69 x 22 x 30 cm
Weight: 37 kg
Power: 1 cv



LIFTER E 200 Hoist

Price per week

55

Price per month

165

Capacity: 300 kg
Lifting speed: 20 m/min
Length of cable: 25 m
Dimensions: 86 x 32 x 49 cm
Weight: 48 kg
Power: 1 cv



LIFTER E 300 Hoist

Price per week

55

Price per month

165

Diesel engine
max cutting depth: 116 mm



MAKITA EK7651H

Price / day (EUR)

50

Price / day (EUR)

40

Price / day (EUR)

30

Total price (EUR)

65

wear of the disk: EUR 74,00 NET per mm consumption

self-propelling scissor platform
Max. working height: 11,75 m
Max. capacity: 318 kg
Weight: 2 781 kg
Length: 2,44 m
Width: 1,17 m



VERTICAL PLATFORM

MANITOU 120 SE

Price / day (EUR)

146

Price / day (EUR)

116.8

Price / day (EUR)

87.6

Total price (EUR)

189.8

self-propelling scissor platform
Max. working height: 7,79 m
Max. capacity: 227 kg
Weight: 1 503 kg
Length: 1,83 m
Width: 0,81 m



VERTICAL PLATFORM

MANITOU 78 SEC

Price / day (EUR)

86

Price / day (EUR)

68.8

Price / day (EUR)

51.6

Total price (EUR)

111.8

self-propelling articulated platform
Max. working height: 18 m
Max. capacity: 230 kg
Max. reach: 10,6 m
Weight: 8 000 kg
Length: 7,77 m



OUTREACHING PLATFORM

MANITOU ATJ180

Price / day (EUR)

175

Price / day (EUR)

140

Price / day (EUR)

105

Total price (EUR)

227.5

Diesel engine
max. load: 7 000 kg
Standard height: 4 000 mm
Netto weight: 9 700 kg
Length: 5 560 mm
Width: 2 150 mm



MANITOU MC70

Price / day (EUR)

160

Price / day (EUR)

128

Price / day (EUR)

96

Total price (EUR)

208

Price per hour: 25 EUR

Electric engine
max. load: 1 500 kg
Standard height: 3 300 mm
Netto weight: 3 060 kg
Length: 2 690 mm
Width: 1 060 mm



MANITOU ME 315

Price / day (EUR)

80

Price / day (EUR)

64

Price / day (EUR)

48

Total price (EUR)

104

Price per hour: 15 EUR

Electric engine
max. load: 1500-2000 kg



MANITOU ME 315 / 320

Price / day (EUR)

80

Price / day (EUR)

64

Price / day (EUR)

48

Total price (EUR)

104

Price per hour: 15 EUR

Electric engine
max. load: 2 000 kg
Standard height: 3 300 mm
Netto weight: 3 565 kg
Length: 2 910 mm
Width: 1 060 mm



MANITOU ME 320

Price / day (EUR)

80

Price / day (EUR)

64

Price / day (EUR)

48

Total price (EUR)

104

Price per hour: 15 EUR

Diesel engine
max. load: 2 500 kg
Standard height: 3 300 mm
Netto weight: 3 895 kg
Length: 3 680 mm
Width: 1 030 mm



MANITOU MI 25

Price / day (EUR)

99

Price / day (EUR)

79.2

Price / day (EUR)

59.4

Total price (EUR)

128.7

Price per hour: 18 EUR

RENT CATALOG

Nom. capacity: 2 300 kg
max. height: 5 m
Max. reach: 2,83 m
Netto weight: 5 090 kg
Length: 4,21 m
Width: 1,80 m



MANITOU MLT 523

Price / day (EUR)	Price / day (EUR)	Price / day (EUR)	Total price (EUR)
120	96	72	156

Nom. capacity: 4 200 kg
max. height: 14,70 m
Max. reach: 12,50 m
Netto weight: 13 955 kg
Length: 5,69 m
Width: 2,43 m



MANITOU MRT 1542

Price / day (EUR)	Price / day (EUR)	Price / day (EUR)	Total price (EUR)
240	192	144	312

CONTINUOUS ROTATION 360°

Nom. capacity: 3 500 kg
max. height: 15,82 m
Max. reach: 13,20 m
Netto weight: 12 955 kg
Length: 6,07 m
Width: 2,39 m



MANITOU MRT 1635

Price / day (EUR)	Price / day (EUR)	Price / day (EUR)	Total price (EUR)
240	192	144	312

CONTINUOUS ROTATION 360°

Nom. capacity: 5 000 kg
max. height: 17,90 m
Max. reach: 15,12 m
Netto weight: 14 580 kg
Length: 6,03 m
Width: 2,43 m



MANITOU MRT 1850

Price / day (EUR)	Price / day (EUR)	Price / day (EUR)	Total price (EUR)
280	224	168	364

CONTINUOUS ROTATION 360°

Nom. capacity: 4 000 kg
max. height: 24,60 m
Max. reach: 18,50 m
Netto weight: 17 165 kg
Length: 7,53 m
Width: 2,43 m



MANITOU MRT 2540

Price / day (EUR)	Price / day (EUR)	Price / day (EUR)	Total price (EUR)
320	256	192	416

CONTINUOUS ROTATION 360°

Capacité nom.: 5 000 kg
max height: 20,60 m
max reach.: 13,10 m
Netto weight: 16 000 kg
Length: 6,78 m
Width: 2,43 m



MANITOU MRT2150

Diesel engine
max. load: 3 000 kg
Standard height: 4 200 mm
Netto weight: 4 515 kg
Length: 2 980 mm
Width: 1 320 mm



MANITOU MSI 30

Price / day (EUR)	Price / day (EUR)	Price / day (EUR)	Total price (EUR)
130	104	78	169

Price per hour: 23 EUR

Diesel engine
max. load: 3 000 - 3 500 kg



MANITOU MSI 30 / 35

Price / day (EUR)	Price / day (EUR)	Price / day (EUR)	Total price (EUR)
130	104	78	169

Price per hour: 22 EUR

Diesel engine
max. load: 3 500 kg
Standard height: 4 200 mm
Netto weight: 5 000 kg
Length: 3 120 mm
Width: 1 730 mm



MANITOU MSI 35

Price / day (EUR)	Price / day (EUR)	Price / day (EUR)	Total price (EUR)
130	104	78	169

Price per hour: 23 EUR

Nom. capacity: 3 000 kg
max. height: 9,98 m
Max. reach: 7,15 m
Netto weight: 7 470 kg
Length: 4,99 m
Width: 2,26 m



MANITOU MT 1030

Price / day (EUR)	Price / day (EUR)	Price / day (EUR)	Total price (EUR)
160	128	96	208

Nom. capacity: 4 000 kg
max. height: 13,53 m
Max. reach: 9,60 m
Netto weight: 11 370 kg
Length: 8,84 m
Width: 2,38 m



MANITOU MT 1440

Price / day (EUR)	Price / day (EUR)	Price / day (EUR)	Total price (EUR)
175	140	105	227.5

RENT CATALOG

Nom. capacity: 3 200 kg
max. height: 9 m
Max. reach: 6,58 m
Netto weight: 7 640 kg
Length: 4,71 m
Width: 2,30 m



MANITOU MT 932 T

Price / day (EUR)	Price / day (EUR)	Price / day (EUR)	Total price (EUR)
150	120	90	195

Nom. capacity: 2 500 kg
max. height: 5,90 m
Max. reach: 3,30m
Netto weight: 4 922 kg
Length: 3,90 m
Width: 1,82 m



MANITOU MT/MLT 625

Price / day (EUR)	Price / day (EUR)	Price / day (EUR)	Total price (EUR)
125	100	75	162.5

Nom. capacity: 4 000 kg
max height: 17,50 m
max reach: 12,35 m
Netto weight: 10 800 kg
Length: 7,18 m
Width: 2,42 m



MANITOU MT1740

Price / day (EUR)	Price / day (EUR)	Price / day (EUR)	Total price (EUR)
190	152	114	247

Nom. capacity: 4 000 kg



MANITOU MT1740 / MT1840

Price / day (EUR)	Price / day (EUR)	Price / day (EUR)	Total price (EUR)
190	152	114	247

Nom. capacity: 4 000 kg
max height: 17,50 m
max reach: 13,17 m
Netto weight: 11 380 kg
Length: 6,27 m
Width: 2,40 m



MANITOU MT1840

Price / day (EUR)	Price / day (EUR)	Price / day (EUR)	Total price (EUR)
190	152	114	247

Capacity: 2 000 kg
Lifting height: 200 mm
Weight: 69 kg
Height of the forks: 85 mm
Length of the forks: 1 150 mm



Manual Hand-truck

Price / day (EUR)	Price / day (EUR)	Price / day (EUR)	Total price (EUR)
13	10.4	7.8	16.9

Core driller
up to 200 mm



MILWAUKEE 2-250

Price / day (EUR)	Price / day (EUR)	Price / day (EUR)	Total price (EUR)
30	24	18	39

wear of the stroke: EUR 54,00 to 94,00 NET per mm consumption depending on size

ALUMINIUM
Height 200 cm
platform 250 x 75 cm



Mobile scaffolding

Price per week	Price per month
30	90

ALUMINIUM
Height 450 cm
platform 250 x 75 cm



Mobile scaffolding

Price per week	Price per month
50	150

ALUMINIUM
Height 800 cm
platform 250 x 75 cm



Mobile scaffolding

Price per week	Price per month
70	210

Weight: 12 000 kg
Width: 2 400 mm
Length: 7 000 mm
Height: 2 790 mm
Power 100 hp



NEUSON 12002 RD

Price / day (EUR)	Price / day (EUR)	Price / day (EUR)	Total price (EUR)
240	192	144	312

RENT CATALOG

Weight: 2 525 kg
Width: 1 370 mm
Length: 3 000 mm
Height: 2 405 mm
Power 24,3 hp



NEUSON 2503

Price / day (EUR)	Price / day (EUR)	Price / day (EUR)	Total price (EUR)
140	112	84	182

Weight: 2 525 / 2 575 kg
Width: 1 370 / 1 500 mm



NEUSON 2503 / 28Z3

Price / day (EUR)	Price / day (EUR)	Price / day (EUR)	Total price (EUR)
140	112	84	182

Weight: 2 575 kg
Width: 1 500 mm
Length: 4 255 mm
Height: 2 408 mm
Power 24,3 hp



NEUSON 28Z3

Price / day (EUR)	Price / day (EUR)	Price / day (EUR)	Total price (EUR)
140	112	84	182

on wheels
Oscillating swivel skip
Maximum load: 4 000 kg
Bucket capacity: 1 650 l
4 wheel drive
Maximal slope: 50 %



NEUSON 3001

Price / day (EUR)	Price / day (EUR)	Price / day (EUR)	Total price (EUR)
173	138.4	103.8	224.9

Weight: 3 630 kg
Width: 1 740 mm
Length: 4 800 mm
Height: 2 500 mm
Power 37 hp



NEUSON 38Z3

Price / day (EUR)	Price / day (EUR)	Price / day (EUR)	Total price (EUR)
160	128	96	208

Weight: 1 800 kg
Width: 1 370 mm
Length: 2 796 mm
Height: 1 930 mm
Power: 36,7 hp
260 l bucket



NEUSON 501 s

Price / day (EUR)	Price / day (EUR)	Price / day (EUR)	Total price (EUR)
100	80	60	130

Weight: 1 800 - 2 300 kg
Width: 1370 mm



NEUSON 501s / GEHL R135

Price / day (EUR)	Price / day (EUR)	Price / day (EUR)	Total price (EUR)
100	80	60	130

Weight: 4 900 kg
Width: 1 990 mm
Length: 5 500 mm
Height: 2 570 mm
Power 48,1 hp



NEUSON 50Z3

Price / day (EUR)	Price / day (EUR)	Price / day (EUR)	Total price (EUR)
175	140	105	227.5

Weight: 5 500 kg
Width: 1 990 mm
Length: 5 600 mm
Height: 2 570 mm
Power 69,5 hp



NEUSON 6003 RD

Price / day (EUR)	Price / day (EUR)	Price / day (EUR)	Total price (EUR)
180	144	108	234

Weight: 5 500 - 6 000 kg
Width: 1 950 - 2 000 mm



NEUSON 6003 RD / ET65

Price / day (EUR)	Price / day (EUR)	Price / day (EUR)	Total price (EUR)
180	144	108	234

Weight: 7 345 kg
Width: 2 300 mm
Length: 5 900 mm
Height: 2 665 mm
Power 69,5 hp



NEUSON 75Z3

Price / day (EUR)	Price / day (EUR)	Price / day (EUR)	Total price (EUR)
210	168	126	273

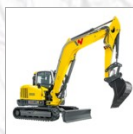
Weight: 7 900 kg
Width: 2 150 mm
Length: 5 900 mm
Height: 2 150 mm
Power 57,9 hp



NEUSON 8003 RD

Price / day (EUR)	Price / day (EUR)	Price / day (EUR)	Total price (EUR)
220	176	132	286

Weight: 7 900 - 8 700 kg



NEUSON 8003 RD / ET90

Price / day (EUR)	Price / day (EUR)	Price / day (EUR)	Total price (EUR)
220	176	132	286

Weight: 935 kg
Width: 860 mm
Length: 2 700 mm
Height: 2 200 mm
Power 13 hp



NEUSON 803

Price / day (EUR)	Price / day (EUR)	Price / day (EUR)	Total price (EUR)
85	68	51	110.5

Weight: 10.000 kg



NEUSON 9503

Price / day (EUR)	Price / day (EUR)	Price / day (EUR)	Total price (EUR)
220	176	132	286

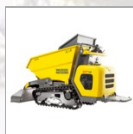
on crawlers
3-side skip
Maximum load: 800 kg
Bucket capacity : 330 l
Length: 1 660 mm
Width: 790 mm



NEUSON DT 08

Price / day (EUR)	Price / day (EUR)	Price / day (EUR)	Total price (EUR)
60	48	36	78

on crawlers
3-side skip
Maximum load: 1 200 kg
Bucket capacity : 400 l
Length: 1 820 mm
Width: 790 mm



NEUSON DT 12

Price / day (EUR)	Price / day (EUR)	Price / day (EUR)	Total price (EUR)
90	72	54	117

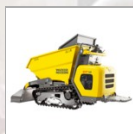
on crawlers
3-side skip
Maximum load: 1 500 kg
Bucket capacity: 555 l
Length: 2 793 mm
Width: 990 mm



NEUSON DT 15

Price / day (EUR)	Price / day (EUR)	Price / day (EUR)	Total price (EUR)
90	72	54	117

on crawlers
3-side skip



NEUSON DT12 / DT15

Price / day (EUR)	Price / day (EUR)	Price / day (EUR)	Total price (EUR)
90	72	54	117

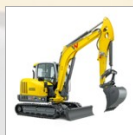
Weight: 1 745 kg
Width: 990 mm
Length: 3 800 mm
Height: 2 290 mm
Power 18,6 hp



NEUSON ET18

Price / day (EUR)	Price / day (EUR)	Price / day (EUR)	Total price (EUR)
120	96	72	156

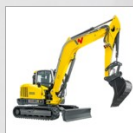
Weight: 5 800 kg
Width: 1 950 mm
Length: 6 128 mm
Height: 2 478 mm
Power: 49 cv



NEUSON ET65

Price / day (EUR)	Price / day (EUR)	Price / day (EUR)	Total price (EUR)
180	144	108	234

Weight: 8 710 kg
Width: 2 250 mm
Length: 7 117 mm
Height: 2 562 mm
Power 74,8 hp



NEUSON ET90

Price / day (EUR)	Price / day (EUR)	Price / day (EUR)	Total price (EUR)
220	176	132	286

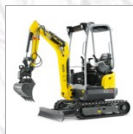
Weight: 6 755 kg



NEUSON EW65

Price / day (EUR)	Price / day (EUR)	Price / day (EUR)	Total price (EUR)
190	152	114	247

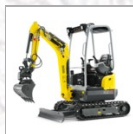
Weight: 1 725 kg
Width: 990 mm
Length: 3 584 mm
Height: 2 362 mm
Power 17,6 hp



NEUSON EZ17

Price / day (EUR)	Price / day (EUR)	Price / day (EUR)	Total price (EUR)
120	96	72	156

Weight: 1 700 kg
Width: 990 mm



NEUSON EZ17 / ET18

Price / day (EUR)	Price / day (EUR)	Price / day (EUR)	Total price (EUR)
120	96	72	156

fueled surfacing float
with kit of blades



NORTON CLIPPER 90

Price / day (EUR)	Price / day (EUR)	Price / day (EUR)	Total price (EUR)
70	56	42	91

Tool for polished concrete: 10,00 EUR NET per rent day

Weight: 410 kg
for 6 - 8 t. excavators
Length: 1 443 mm



NPK E204

Price / day (EUR)	Price / day (EUR)	Price / day (EUR)	Total price (EUR)
86	68.8	51.6	111.8

picks included

Weight: 390 kg
for 6 - 8 t. excavators
Length: 1 655 mm



NPK GH3

Price / day (EUR)	Price / day (EUR)	Price / day (EUR)	Total price (EUR)
86	68.8	51.6	111.8

picks included

Weight: 570 kg
for 8 - 14 t. excavators
Length: 1 954 mm



NPK GH4

Price / day (EUR)	Price / day (EUR)	Price / day (EUR)	Total price (EUR)
107	85.6	64.2	139.1

picks included

Weight: 1 345 kg
for 14 - 21 t. excavators
Length: 2 275 mm



NPK GH7

Price / day (EUR)	Price / day (EUR)	Price / day (EUR)	Total price (EUR)
260	215	160	338

picks included

Weight: 105 kg
for 1 - 2,5 t. excavators
Length: 984 mm



NPK H-08A

Price / day (EUR)	Price / day (EUR)	Price / day (EUR)	Total price (EUR)
55	44	33	71.5

picks included

Weight: 150 kg
for 1 - 2,5 t. excavators
Length: 1 150 mm



NPK H-1XA

Price / day (EUR)	Price / day (EUR)	Price / day (EUR)	Total price (EUR)
55	44	33	71.5

picks included

Weight: 240 kg
for 1 - 2,5 t. excavators
Length: 1 261 mm



NPK H-2XA

Price / day (EUR)	Price / day (EUR)	Price / day (EUR)	Total price (EUR)
55	44	33	71.5

picks included

RENT CATALOG

Weight: 365 kg
for 2,5 -3,5 t. excavators
Length: 1 364 mm



NPK H-3XA

Price / day (EUR)	Price / day (EUR)	Price / day (EUR)	Total price (EUR)
71	56.8	42.6	92.3

picks included

for Maniscopics
365 kg



Platform for 2 persons

Price / day (EUR)	Price / day (EUR)	Price / day (EUR)	Total price (EUR)
30	24	18	39

for Maniscopics
1.000 kg



Platform for 3 persons

Price / day (EUR)	Price / day (EUR)	Price / day (EUR)	Total price (EUR)
40	32	24	52

Length: 6 m
Width: 2,40 m
Height: 2,80 m



RENZI Container

Price per month
233

Length: 1 m
Int. diameter: 40 - 50 cm
Weight: 11 kg



Rubbish pipes (piece)

Price / day (EUR)	Price / day (EUR)	Price / day (EUR)	Total price (EUR)
2.5	2	1.5	3.25

Capacity 100 / 125 liters

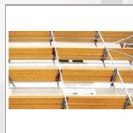


SAPI 100

Price / day (EUR)	Price / day (EUR)	Price / day (EUR)	Total price (EUR)
35	28	21	45.5

selling price for QUARTZ/TESTRA sand: 6,50 EUR per bag

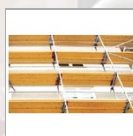
standard
price per m2



Scaffolding

Price per month
2.75

small and vertical (< 30 m3)
price per m2



Scaffolding

Price per month
3.5

Electric planing machine 220 V



SCHWAMBORN BEF 203E

Price / day (EUR)	Price / day (EUR)	Price / day (EUR)	Total price (EUR)
50	40	30	65

electric sander machine
with grinding ring



SCHWAMBORN STR580

Price / day (EUR)	Price / day (EUR)	Price / day (EUR)	Total price (EUR)
50	40	30	65

Grinding ring Ø 43 cm for stones: 5,00 EUR NET per mm consumption

Triphase diesel



SDMO 110 KVA

Price / day (EUR)	Price / day (EUR)	Price / day (EUR)	Total price (EUR)
123	98.4	55.35	159.9

for a use of 8 hrs/day, 40 hrs/week, 200 hrs/month and 12 hrs/week-end

RENT CATALOG

Triphase diesel



SDMO 15 KVA

Price / day (EUR)	Price / day (EUR)	Price / day (EUR)	Total price (EUR)
45	36	20.25	58.5

for a use of 8 hrs/day, 40 hrs/week, 200 hrs/month and 12 hrs/week-end

Triphase fuel



SDMO 15 KVA

Price / day (EUR)	Price / day (EUR)	Price / day (EUR)	Total price (EUR)
35	28	15.75	45.5

for a use of 8 hrs/day, 40 hrs/week, 200 hrs/month and 12 hrs/week-end

Triphase diesel



SDMO 165 KVA

Price / day (EUR)	Price / day (EUR)	Price / day (EUR)	Total price (EUR)
155	124	69.75	201.5

for a use of 8 hrs/day, 40 hrs/week, 200 hrs/month and 12 hrs/week-end

Triphase diesel



SDMO 33 KVA

Price / day (EUR)	Price / day (EUR)	Price / day (EUR)	Total price (EUR)
70	56	31.5	91

for a use of 8 hrs/day, 40 hrs/week, 200 hrs/month and 12 hrs/week-end

Triphase diesel



SDMO 44 KVA

Price / day (EUR)	Price / day (EUR)	Price / day (EUR)	Total price (EUR)
86	68.8	38.7	111.8

for a use of 8 hrs/day, 40 hrs/week, 200 hrs/month and 12 hrs/week-end

Mono fuel



SDMO 6 KVA

Price / day (EUR)	Price / day (EUR)	Price / day (EUR)	Total price (EUR)
25	20	11.25	32.5

for a use of 8 hrs/day, 40 hrs/week, 200 hrs/month and 12 hrs/week-end

Triphase diesel



SDMO 66 KVA

Price / day (EUR)	Price / day (EUR)	Price / day (EUR)	Total price (EUR)
100	80	45	130

for a use of 8 hrs/day, 40 hrs/week, 200 hrs/month and 12 hrs/week-end

160 - 290 cm
price per piece


Standard props

Price per month
1.25

190-340 or 250-440 cm
price per piece


Standard props

Price per month
1.75

190 - 340 cm
price per piece


T-P props

Price per month
2.5

price per piece



Tripod for props

Price per month
2.5

RENT CATALOG

electric 380 V
Max. output: 132 m3/h
Max. elevation: 30 m
Length: 687 mm
Width: 400 mm
Height: 814 mm



TSURUMI 100BZ 43.7

Price / day (EUR)	Price / day (EUR)	Price / day (EUR)	Total price (EUR)
35	28	21	45.5

Platform on trailer
Max. working height: 17 m
Max. capacity: 215 kg
Max. reach: 8,50 m
Weight: 2 000 kg
Length folded: 5,90 m



UP-RIGHT TL49

Price / day (EUR)	Price / day (EUR)	Price / day (EUR)	Total price (EUR)
136	108.8	81.6	176.8

OUTREACHING PLATFORM

Fuel



VIBRATOR

Price / day (EUR)	Price / day (EUR)	Price / day (EUR)	Total price (EUR)
27	21.6	16.2	35.1

Electric



VIBRATOR

Price / day (EUR)	Price / day (EUR)	Price / day (EUR)	Total price (EUR)
27	21.6	16.2	35.1

removable building-site door



VOLBERG door

Price per month
25

for vibrating plates AVP1240 / AVP1850

Vulkollan Add-On

Price / day (EUR)	Price / day (EUR)	Price / day (EUR)	Total price (EUR)
8	6.4	4.8	10.4

Set for wheeled cutter

Wheeled cutter

Price / day (EUR)	Price / day (EUR)	Price / day (EUR)	Total price (EUR)
50	40	30	65

330 cm
price per piece



Woodem beams

Price per month
3.5

360 cm
price per piece



Woodem beams

Price per month
3.75

1 General information

The general renting conditions are valid for all renting transactions between the firms COMAT SA, COMAT LOCATION SA or COMAT Matériel Srl (vendor) and their customers. They are not applied to sales transactions or reparations.

A renting transaction in the terms of this conditions is the provision of a machine or equipment for a certain laps of time without any intellectual service like maintenance, guidance or start-up.

2 Contract

The contract between the vendor and the customer is formed by the signing of a renting order. It expires when the customer has returned the goods in the conditions noted in 11

The vendor has the right to outsource the contract or part of it without any formalities. The customer however needs a written autorisation from the vendor to sublease the goods.

3 Property and risks

The goods remain in the property of the vendor. The vendor has the right to supervise and control the goods during the renting time with any GPS or satellite control system.

The customer has the liability for the goods. He has to assume any risks and is liable for any damage done to or by the goods

If the goods are lost or damaged, the customer has to advise the vendor within 12 hours.

The renting price doesn't include any insurance.

4 Payment and price

Invoices are to be paid within 30 days of their editing date.

Payements in instalments, discounts or reductions are only possible if the terms of payment are respected. If they are not, the total amount of the invoice is due.

If an invoice is not paid at due date, it will immediately and without any formality bear an interest rate.

Any reminder can be invoiced with 25 EUR to the customer. In case of a legal action, a fee of 1000 EUR can also be invoiced to the client.

If an invoice isn't paid by the customer, the vendor has the right to recover the goods that this invoice is related to, 48 hours after having advised the customer. A possible deposit can be used to pay the invoices.

All prices are VAT excluded ex warehouse. Renting prices for machines are valid for a use of 8 hours a day, 40 hours a week and 160 hours a month. If these limits are not respected, supplementary hours can be invoiced. The "WEEK-END" price is valid for a use of 12 working hours, otherwise, a supplementary day can be invoiced. For "WEEK-END" use, the goods must be delivered on Friday after 16 o'clock or on Saturday morning and returned to the vendor on Monday before 8h30 o'clock.

All prices on our internet sites are only for information and are not binding for the vendor.

5 Penalty

In case of non-payment of an invoice at due date, the vendor can require a penalty payment of up to 10 % of the amount of the invoice per day.

6 Deposit

Before handing out the goods, the vendor can ask for a copy of an ID card of the customer and also for a deposit of an amount up to the value of the goods. This deposit will not produce any interest.

7 Complaints

Any complaints concerning an invoice have to be done within 10 days. After that, the invoice will be considered as correct.

8 Delivery

The goods are handed out to the customer in good conditions.

The vendor or the customer can ask for an inventory report about the condition of the goods and their conformity. If the customer is not present at the delivery, he has to forward his remarks concerning the condition of the goods to the vendor on the next day.

Delivery has to be advised to the other part in a reasonable delay.

Deadlines or delivery dates indicated in our offers are only for information. If they are not respected, the customer doesn't have automatically the right to cancel the order or claim any penalty.

9 Use of the goods

The customer is liable for the goods during the renting period.

The customer is responsible for the correct use of the goods and the correct conditions in which they have to be used. He has to respect any public legal, environmental, health or security prescriptions that exist.

The equipment has to be used by qualified persons only, who have the necessary authorizations to do so. If not, the vendor can recover the goods and ask for a compensation fee for possible damage.

The customer has to respect the law and the regulations. Following points are important among others:

* our compressors and mobile power generators are not registered for public traffic and we advise our customers to load them on a van for transport. If they are trailed behind a vehicle, the maximum speed is of 40 km/h and the vehicle can not acces motorways.

* only persons with the required specific diplomas can use our handling equipment.

The customer has to assume the maintenance and proceed to the daily maintenance operations like cleaning, lubricating, control of the tyre pressures etc. The goods have to be in a clean condition.

10 Damage and reparations

The customer has to advise the vendor immediately of any damage on the goods. He has to stop using the damaged goods and cannot repair himself the goods without the permission of the vendor.

The vendor will try to repair or replace the damaged goods as soon as possible and will not invoice the period during which it was not possible to use the goods.

If the damage has been caused by the customer or if the goods have not been returned to the vendor, the vendor can charge the customer with any reparation, exchange or replacement costs for an equal equipment.

In case of a deposit, the deposit can be used by the vendor to pay this invoice.

11 Return of the goods

The customer has to return the goods completely and in good condition to the vendor. The goods are not supposed to have any damage except the normal wear for a normal use during the rent period.

The goods are clean and fueled up at the delivery, so they have to be in the same condition upon return.

Possible cleaning costs as well as consumption goods such as fuel, sand or wear of cutting and drilling equipment are invoiced to the customer.

Possible repair costs or non-returning of a part of the goods can be invoiced to the customer.

If the goods are not returned at the end of the rent period, the vendor has the right to recover them or use the deposit to replace the goods.

If the goods are returned with a delay at the end of the renting period, this delay can be invoiced to the customer

Delivery has to be advised to the other part in a reasonable delay.

If the goods are not damaged and in good condition, the vendor has to return the deposit to the customer, except for the cases treated in \$4 and \$10 of the present conditions.

12 Eviction of the vendor and limited liability

The customer is not allowed to sell or pledge the goods. If a third person claims some rights on the goods, the customer has to advise the vendor immediately. The customer cannot remove any of the property signs or inscriptions on the goods. He cannot implement his own signs or inscriptions on the equipment.

The vendor is not liable for any direct or indirect damage caused in relation with the contract, not even for work interruption or financial losses

13 Cancellation clause

The vendor has the right to cancel the order if the customer doesn't execute his obligations. In this case, the client won't prevent the vendor from recovering the goods.

If the customer cancels the contract before the end of the rental period, the total amount of the rent is nevertheless due to the vendor.

12 Final clauses

The customer renounces to his own general conditions

The contract is filed under Luxembourg law

In case of legal action, only the courts of Luxembourg-City are competent

The client will not charge any legal fees to the vendor

These summarized conditions are samples that have been translated from the French General Renting Conditions ("conditions générales de location"). Only the full French text is deciding and legally binding.